

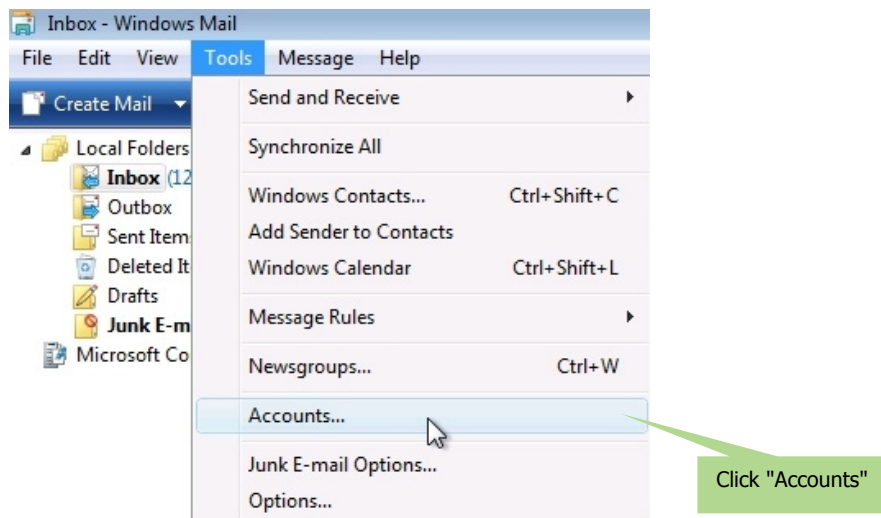
## Configure glooqConnect

### Vista Mail

To configure your Vista Mail, please follow the detailed steps below.

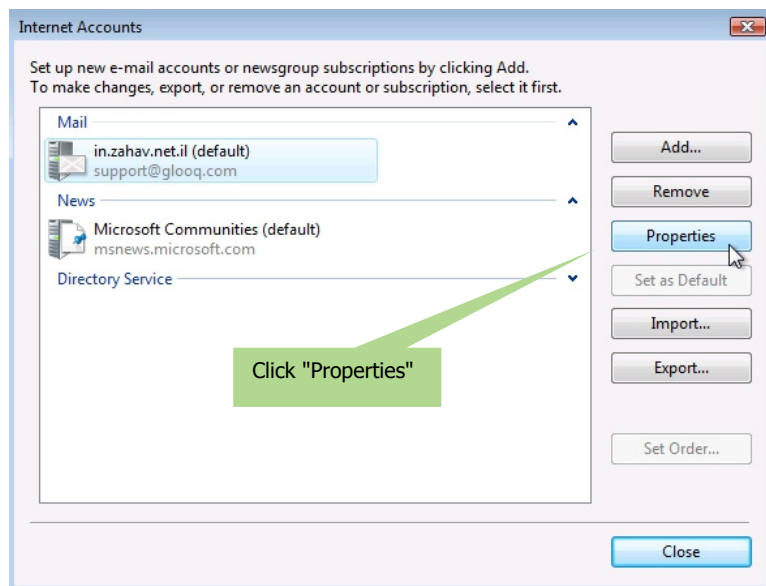
#### 1.

Open your Vista Mail client. Click "Tools" → "Accounts...".



#### 2.

Select your mail account and click "Properties".



### 3.

- a. Change the "Outgoing mail server (SMTP)" to the address that is given to you by glooq.
- b. After you change the SMTP server name, select the checkbox: "My server requires authentication".
- c. After you change the SMTP server name, click "Settings".



Do not change the "Incoming mail server (POP3)" or "E-mail username". These settings are for your incoming mail and are not managed by glooq.

General Servers Connection Security Advanced

Server Information

My incoming mail server is a  server.

Incoming mail (POP3):

Outgoing mail (SMTP):

Incoming Mail Server

E-mail username:

Password:

Remember password

Log on using Secure Password Authentication

Outgoing Mail Server

My server requires authentication

a. Change "Outgoing Mail"

b. select the checkbox

c. Click "Settings"

## 4.

Select the "Log on using", and make sure that the configuration is as follows:

[The Username & Password will be provided by the glooq technical division.]

After you're done, just click "OK" → "Next" → "Finish".

Outgoing Mail Server

Logon Information

Use same settings as my incoming mail server

Log on using

E-mail username: youremail@server.com

Password: ●●●●●●●●

Remember password

Log on using Secure Password Authentication

OK Cancel

That's it. You're set to go.

We hope that you will enjoy using our unique glooqConnect system.

For any query, please do not hesitate to contact us on [support@glooq.com](mailto:support@glooq.com)