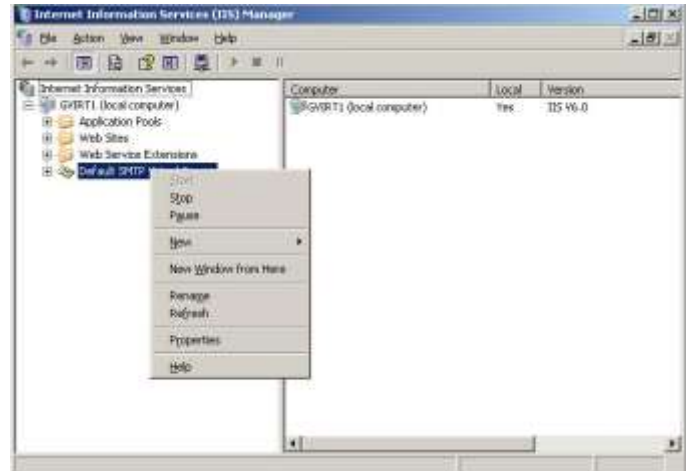


Configure SMTP Relay / Microsoft Windows Server 2003

In this guide, I will explain how to configure the relay settings. These settings also apply to Microsoft Exchange Server 2003, however instead of opening the IIS manager; you need to open Microsoft Exchange manager. Relay settings are necessary to allow email traffic from your corporate email server to the glooqPro server. Let's begin:

1. Open IIS Manager

From Windows Start menu, click **Run**.
In the "Open" box, type **inetmgr**, and click **OK**.
Right click on "Default SMTP Virtual Server" -> click **Properties**.



2. Allow relay

Go to the "Access" tab, and click on "Relay..." button.

Allow access only for your network subnet / single IP or domain name. This setting is important to allow email traffic from your corporate email server to the glooqPro server.

After you're done, click "OK".

