

Configure SMTP Relay / Microsoft Exchange Server 2007

In this guide, I will explain how to configure the relay settings.

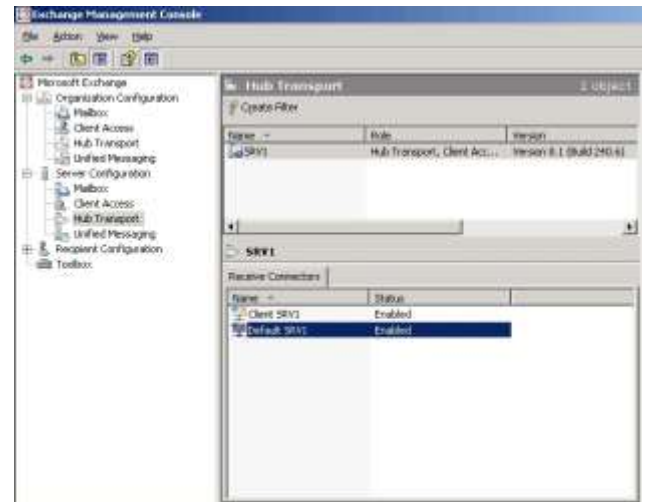
Relay settings are necessary to allow email traffic from your corporate email server to the glooqPro server.

Let's begin:

1. Open Exchange Management Console

Open Exchange Management Console.

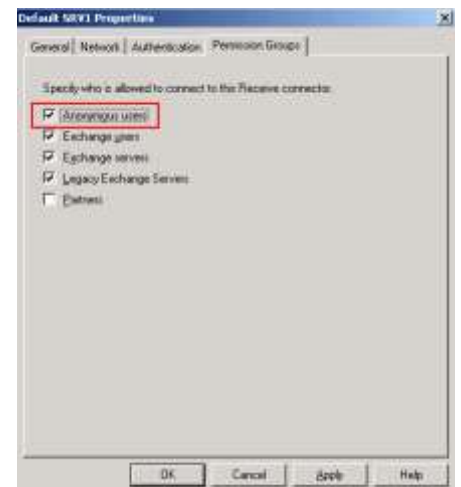
Navigate to "Server Configuration" and click on "Hub Transport".



2. Allow relay

Right click on your Default Receive Connector and then click Properties.

Click on "Permission Groups" and select "Anonymous users".



3. Alternative method

To activate Anonymous users to use this connector for relaying, you can issue the following command instead:

*Make sure to replace **Receive Connector Name** with the actual name of your connector.

Get-ReceiveConnector "Receive Connector Name" | Add-ADPermission -User "NT AUTHORITY\ANONYMOUS LOGON" -ExtendedRights "Ms-Exch-SMTP-Accept-Any-Recipient"